

Highlights

- ☑ **Passive DWDM multiplexers with 4, 8, or 16 channels**
- ☑ **Passive DWDM Drop/Pass units with 1, 2, 4, 8, or 16 channels**
- ☑ **Passive DWDM Drop/Insert units with 1, 2, or 4 channels**
- ☑ **Up to 10 Gbit/s per channel**
- ☑ **Compliant to ITU-T G.694.1 DWDM standard, 100GHz Grid**
- ☑ **Easy integration of new services over existing fiber optic lines**
- ☑ **Metro distance, up to 80 km**
- ☑ **Fully transparent to all data rates and protocols**
- ☑ **Entirely passive device, no power supply needed**

express DWDM

Maximum Throughput over Fiber Optic



The flexible express DWDM/OADM concept allows making the optimum use of your current fiber optic infrastructure in an ideal way.

It will transmit more than 40 connections of different standards, data rates or protocols over one common fiber optic link. In conjunction with modern transceivers, data rates of up to 10 Gbit/s per channel

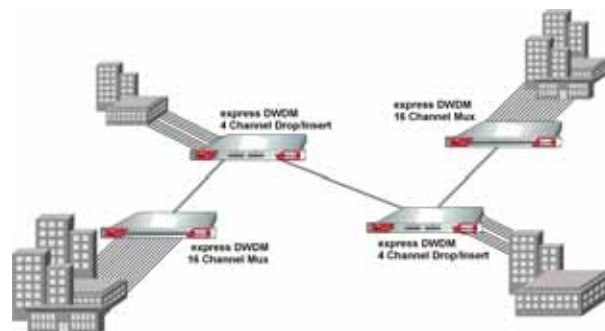
are available.

The cascadability of the express DWDM system allows an individual and modular construction of your passive infrastructure: the multiplexers connect up to 16 channels over a point-to-point bus, while you can drop and insert channels or build an optical add-and-drop DWDM ring with the complementary drop/pass and drop/insert units. Also, combining express DWDM muxes with existing CWDM equipment is supported.

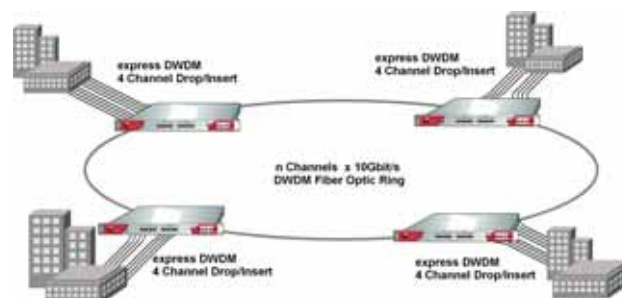
Due to its purely passive technology, the express DWDM series is well-prepared for building a fail-safe and maintenance-free backbone architecture.

Application Examples

- **Enterprises and Carriers/Telcos with Fiber Infrastructure**
- **Access to Additional Applications via Existing Links**
- **Adding of more channels to existing CWDM lines**
- **Cost-Effective Transmission of High Data Volumes**
- **Ideal Solution for Metro-Core, Metro-Access and Enterprises**



Connecting four Locations with multiple 10Gbit/s Point-to-Point DWDM Add/drop Fiber Optic Lines



Connecting Locations with a Multiple-10Gbit/s Fiber Optic Ring using DWDM Drop/Insert Units

express DWDM

Maximum Throughput over Fiber Optic

Specification

DWDM Channels	1/2/4/8/16 Single-mode Duplex LC Connector, max. 10 Gbit/s, Channel Separation 100GHz Supports ITU-T G.694.1
Network/ Network-East/ Network-West Port	Broadband Port Single-mode Duplex LC-Connector
Power Supply	Not Needed
Mechanical	19" 1HU, Depth 260 mm
Environmental	Temperature 0-60°C, Humidity max. 90%, Non-condensing

Ordering Information

DWDM Multiplexer Units	DWDM Drop/Pass Units	DWDM Drop/Insert Units
express DWDM 5516 16 x Channel 1 x DWDM Network Ord. Code: G5516-YYYY.YY-100	express DWDM 5616 16 x Channel Drop 1 x DWDM Network West 1 x DWDM Network East Ord. Code: G5616-YYYY.YY-100	
express DWDM 5508 8 x Channel 1 x DWDM Network Ord. Code: G5508-YYYY.YY-100	express DWDM 5608 8 x Channel Drop 1 x DWDM Network West 1 x DWDM Network East Ord. Code: G5608-YYYY.YY-100	
express DWDM 5504 4 x Channel 1 x DWDM Network Ord. Code: G5504-YYYY.YY-100	express DWDM 5604 4 x Channel Drop 1 x DWDM Network West 1 x DWDM Network East Ord. Code: G5604-YYYY.YY-100	express DWDM 5704 4 x Channel Drop 4 x Channel Insert 1 x DWDM Network West 1 x DWDM Network East Ord. Code.: G5704-YYYY.YY-100
	express DWDM 5602 2 x Channel Drop 1 x DWDM Network West 1 x DWDM Network East Ord. Code: G5602-YYYY.YY-100	express DWDM 5702 2 x Channel Drop 2 x Channel Insert 1 x DWDM Network West 1 x DWDM Network East Ord. Code.: G5702-YYYY.YY-100
	express DWDM 5601 1 x Channel Drop 1 x DWDM Network West 1 x DWDM Network East Ord. Code: G5601-YYYY.YY-100	express DWDM 5701 1 x Channel Drop 1 x Channel Insert 1 x DWDM Network West 1 x DWDM Network East Ord. Code: G5701-YYYY.YY-100

Explanation of YYYY.YY :

This is the wavelength of the devices' start channel in nm, according to ITU-T G.694.1 (100GHz Grid).

Adjacent channels following in ascending order (in nm).

Available channels: 1528.77nm - 1563.86nm (corresponding to widely used channel no. 61 - 17)

Other DWDM multiplexer types are available on request.