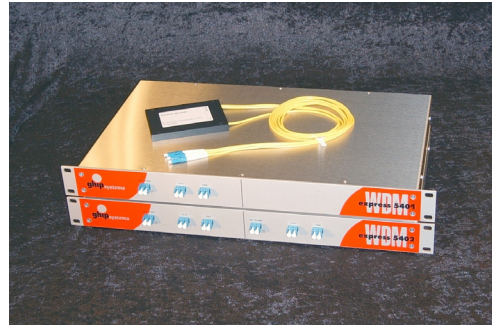


Highlights

- ☑ Easy integration of new services over existing fiber optic lines
- ☑ Low-cost transceivers applicable, existing equipment can still be used
- ☑ Up to 10 Gbit/s per channel
- ☑ Fully transparent to all data rates and protocols
- ☑ Multiplexer device in 19" housing or fully flexible patch cable unit
- ☑ Entirely passive device, no power supply needed

express WDM

Double Bandwidth over Fiber Optics



The express WDM concept is the easiest solution for increasing the bandwidth on fiber optic lines.

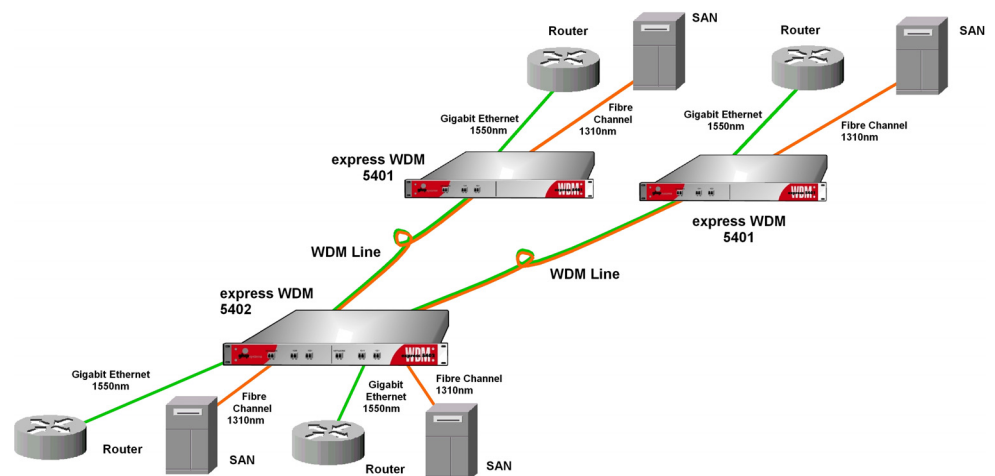
The express WDM with 1310/1550 nm enables the multiplexing and demultiplexing of two wavelength regions with high isolation and low insertion loss. This way, the capacity of fiber optic lines are being doubled in a cost-effective way.

The channel transport wavelengths - 1310 nm and 1550 nm - support the existing legacy standards for data transmission over fiber optic lines. Therefore, using special transceivers, GBICs, or SFP modules is not necessary for WDM.

WDM components are extensively used in datacommunication and telecom networks.

Application Examples

- 1310/1550 nm simultaneous operation on a single fiber
- Doubles the Capacity of Existing Links



Dual WDM Application with Four Independent Data Channels over Two Fiber Optic Lines

express WDM

Double Bandwidth over Fiber Optics

Specification

WDM Channels	Single-mode Fiber Duplex LC Connector (Device) Simplex LC or SC Connector (Patch Unit) Max. 10 Gbit/s
Wavelengths	1 x 1310 nm, 1 x 1550 nm
WDM Network Port	Single-mode Fiber Duplex LC Connector (Device) Simplex LC or SC Connector (Patch Unit)
Power Supply	Not Needed
Mechanical	19" 1HU, Depth 260 mm (Device) Box with 3 Patch Cables (Patch Unit)
Environmental	Temperature 0-60°C, Humidity max. 90%, Non-condensing

Ordering Information

<p>express WDM 5401 WDM multiplexer in 19" housing 1 x Duplex LC Network 1 x Duplex LC 1310nm 1 x Duplex LC 1550nm</p> <p>Order Code: G5401-1310-1550</p>	<p>express WDM 5402 Two WDM multiplexers in one 19" housing 2 x Duplex LC Network 2 x Duplex LC 1310nm 2 x Duplex LC 1550nm</p> <p>Order Code: G5402-1310-1550</p>
<p>WDM Patch Unit Patch box with cables, cable length 2m 1 x Simplex LC Network 1 x Simplex LC 1310nm 1 x Simplex LC 1550nm</p> <p>Order Code: WDM-1310-1550-SM-LC-2</p>	<p>WDM Patch Unit Patch box with cables, cable length 2m 1 x Simplex SC Network 1 x Simplex SC 1310nm 1 x Simplex SC 1550nm</p> <p>Order Code: WDM-1310-1550-SM-SC-2</p>