

Highlights

- ☑ Managed Layer-2 switch with eight Gigabit Ethernet ports, each one provided both as copper and fiber optic (SFP) connector
- ☑ Each port detects and changes automatically between copper and fiber optic link
- ☑ Supports trunking of up to two trunks
- ☑ Each port can be used as switch port, trunk port or ethernet fiber-to-copper media converter
- ☑ VLAN, QoS, rate limiting, RMON-MIB supported
- ☑ Copper interface: auto negotiation or forced half/full 10/100/1000M, MDI/MDI-X
- ☑ Fiber interface: 1000M full duplex, via SFP transceiver, allows selection of multi-mode, single-mode, WDM or CWDM for each port individually
- ☑ Digital Diagnostic Monitoring (DDM) of the SFP modules
- ☑ Integrated management via VT100-CLI, SNMP and Telnet
- ☑ Redundant Power Supply 100-240V AC or -48V DC, redundant fans

switch GIGA 6208+8

Flexible Dual-Standard Metro Switch with Fiber/Copper Media Converter Option



The rack-mountable dual-standard metro switch GIGA 6208+8 is a flexible Gigabit Ethernet layer-2 switch with eight copper/fiber Ethernet ports and integrated management.

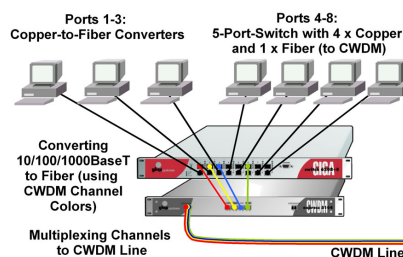
The chance to complete each port with an individually selectable fiber optic SFP module makes it suitable for use as a central backbone switch or as an access device to a fiber optic backbone ring.

Additionally, each port can be detached from the switch, to be used as an Ethernet copper-to-fiber media converter. This way, the switch GIGA 6208+8 can also be configured as a space-saving managed 8-channel media converter, or even as a mixed switch/converter device.

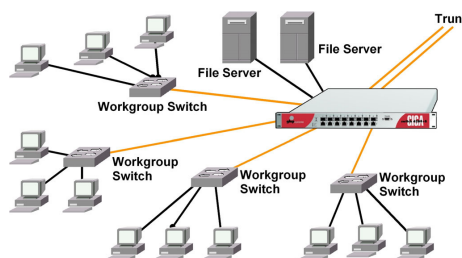
Due to the power supply and fan redundancy and the configurable trunking mode with up to two trunks, this switch is also well-prepared for use in environments with demand for high reliability.

Application Examples

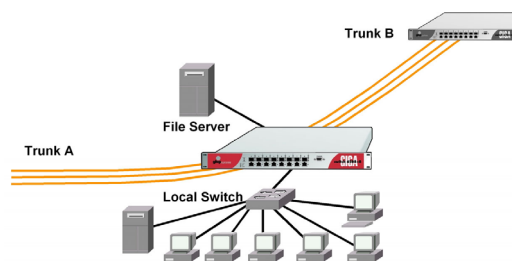
- Enterprise Backbone Switch with 8 Copper/Fiber Ports
- Ethernet CWDM Point-to-Point or Ring Networks
- Workgroup Switch with 8 x Fiber Optic
- 8 x Gigabit Ethernet Fiber-to-Copper Media Converter
- Last-Mile-Ethernet for Telcos and Carriers/Providers



The switch GIGA as Workgroup-Switch with three additional Ethernet Copper-to-Fiber Media Converters (connecting to a CWDM line)



The switch GIGA working as a Backbone Switch



The switch GIGA working as Access Switch in a Backbone Trunk

switch GIGA 6208+8

Flexible Dual-Standard Metro Switch
with Fiber/Copper Media Converter Option

Specification

Gigabit Ethernet Switch	Layer-2 Switch with VLAN, QoS, Rate Limiting, RMON-MIB, Trunking
Copper Interfaces	8 x RJ45, Data Rate 10/100/1000Base-T, Auto Negotiation, MDI / MDI-X
Fiber Optic Interfaces	8 x SFP module slot 1000Base-F (1,25 Gbit/s) with Digital Diagnostic Monitoring (DDM)
Port Modes	Switch Port, Trunk Port, Media Converter
Management	VT100 Console SNMP Configuration and Monitoring Telnet Console Power and Status LEDs Software Update via TFTP
Power Supply	Two Redundant Plugs with 2 x 100 - 240V AC or 2 x -48V DC
Fans	Redundant Fan
Mechanical	19" 1HU, Depth 260 mm
Environmental	Temperature 0-40°C, Humidity max. 90%, Non-condensing

Ordering Information

switch GIGA 6208+8 Layer-2 Switch with 8 x Dual-Standard Ports, each Copper (RJ45 Connector) plus Fiber (SFP-Slot) VT100/Telnet/SNMP, redundant power supply and fan	2 x 100-240V, european plug Order Code: G6208+8-EU 2 x 100-240V, US plug Order Code: G6208+8-US 2 x -48V Order Code: G6208+8-48
---	---